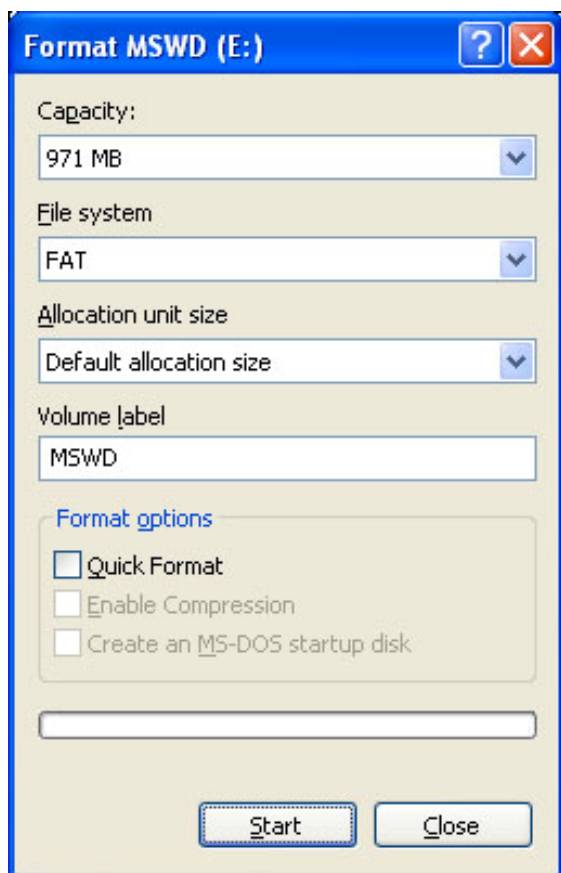


## Rebuilding a C2012 microSwitch Digital microSD Card

The files from the microSD card (with the factory configuration) in a zipfile is available at <http://www.microswitch.co.uk/MSWD/microSwitch-SD-Card-V4.18.zip>.

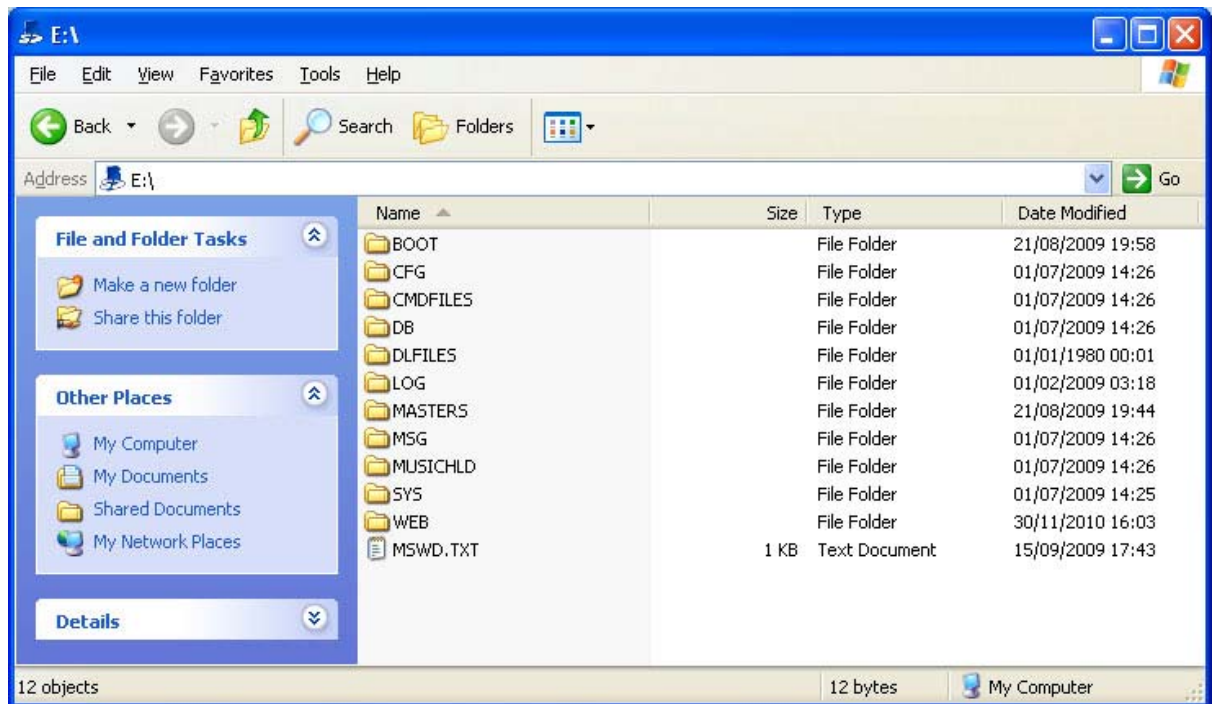
The following steps will need to be taken to reprogram the card.

1. Turn the microSwitch off and remove the microSD card from the system.
2. Insert the microSD card into a SD card reader on a PC
3. Open windows explorer and find the microSD card – It should have the label “microSwitch” or “Secure Digital storage device”
4. Right-hand click on the label and select “Format...”
5. The following dialog will appear. Make sure that the **capacity** is **1.83GB** as it is a 2GB card.



6. Set the volume label to “**MSWD**”
7. Click “**Start**”
8. Click “**OK**” on the confirmation dialog
9. Click “**Close**” after the format has been completed.
10. Copy the files from the zip file to the microSD so that the folders BOOT,CFG,CMDFILES etc are in the root of the microSD card

11. The microSD card should look like this.



12. Remove the SD card from the PC using the correct procedure (safely remove hardware, etc)

13. Insert the microSD back into the exchange and turn on.